



ekoCALM

Control / **A**larm / **L**og / **M**onitor

Login

Password

Company

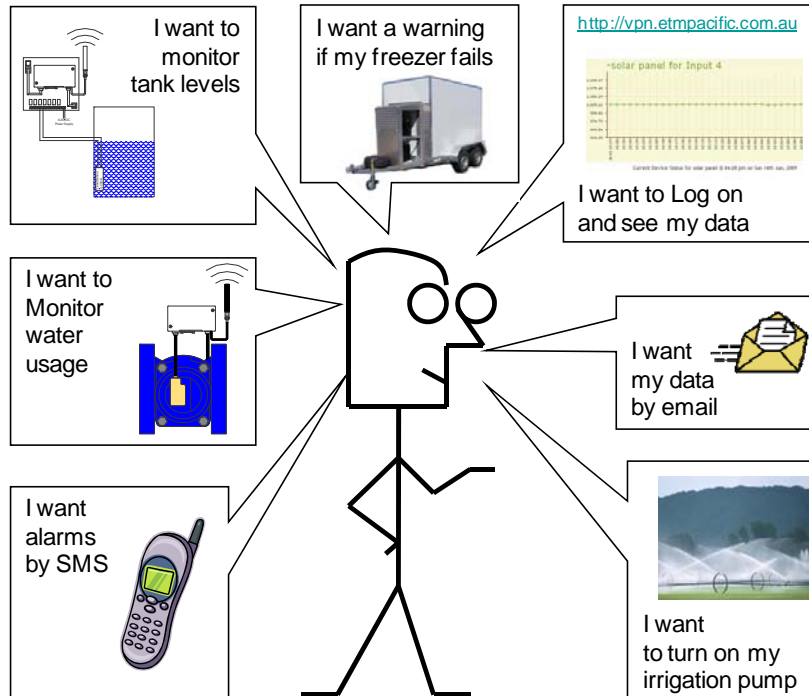
If you have not been provided a 'Company' then
you should enter
ETM Pacific Pty Ltd

Login

Login to control, alarm, log or monitor... whatever you need, using our combination of GSM/GPRS/UMTS devices and our Web access portal, your own server or third party services.

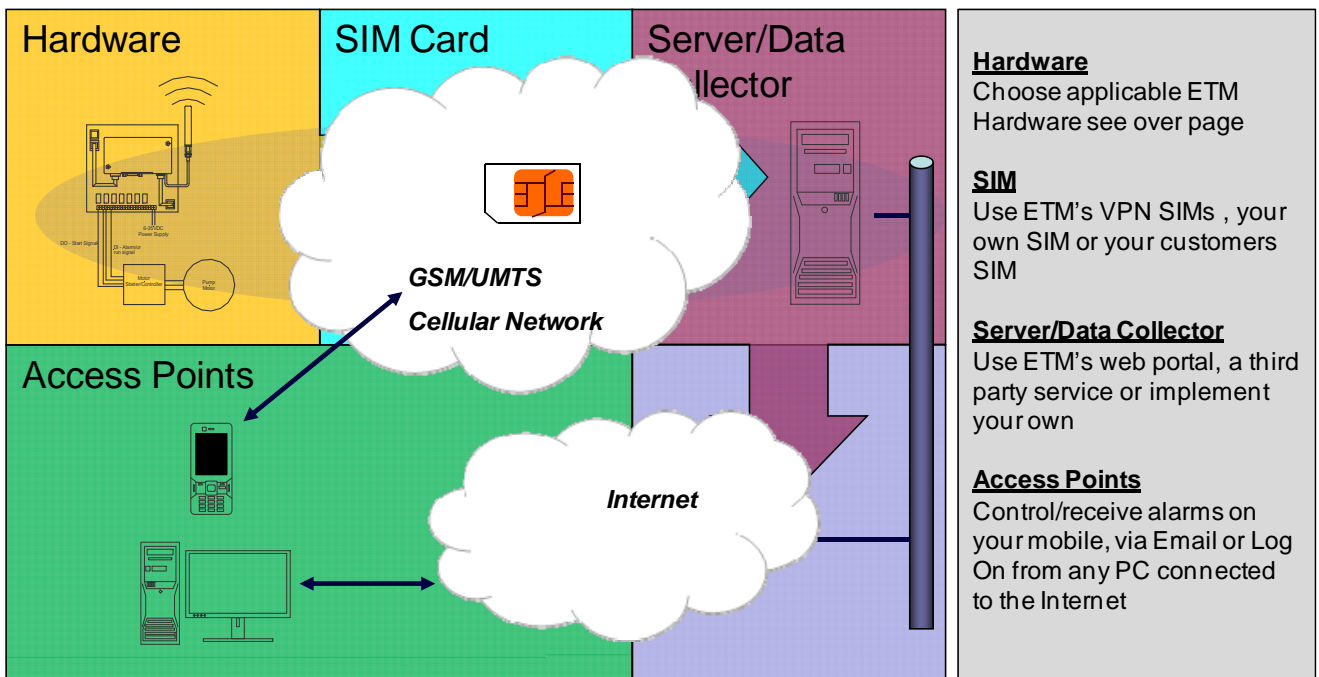
What Is Possible?

The range of products outlined in this brochure will allow for gathering of data from analogue sensors, pulse outputs, digital outputs or similar, plus control/switching of devices via SMS or IP connection over cellular mobile networks. The applications to which these devices and services can be applied are only limited by your imagination.



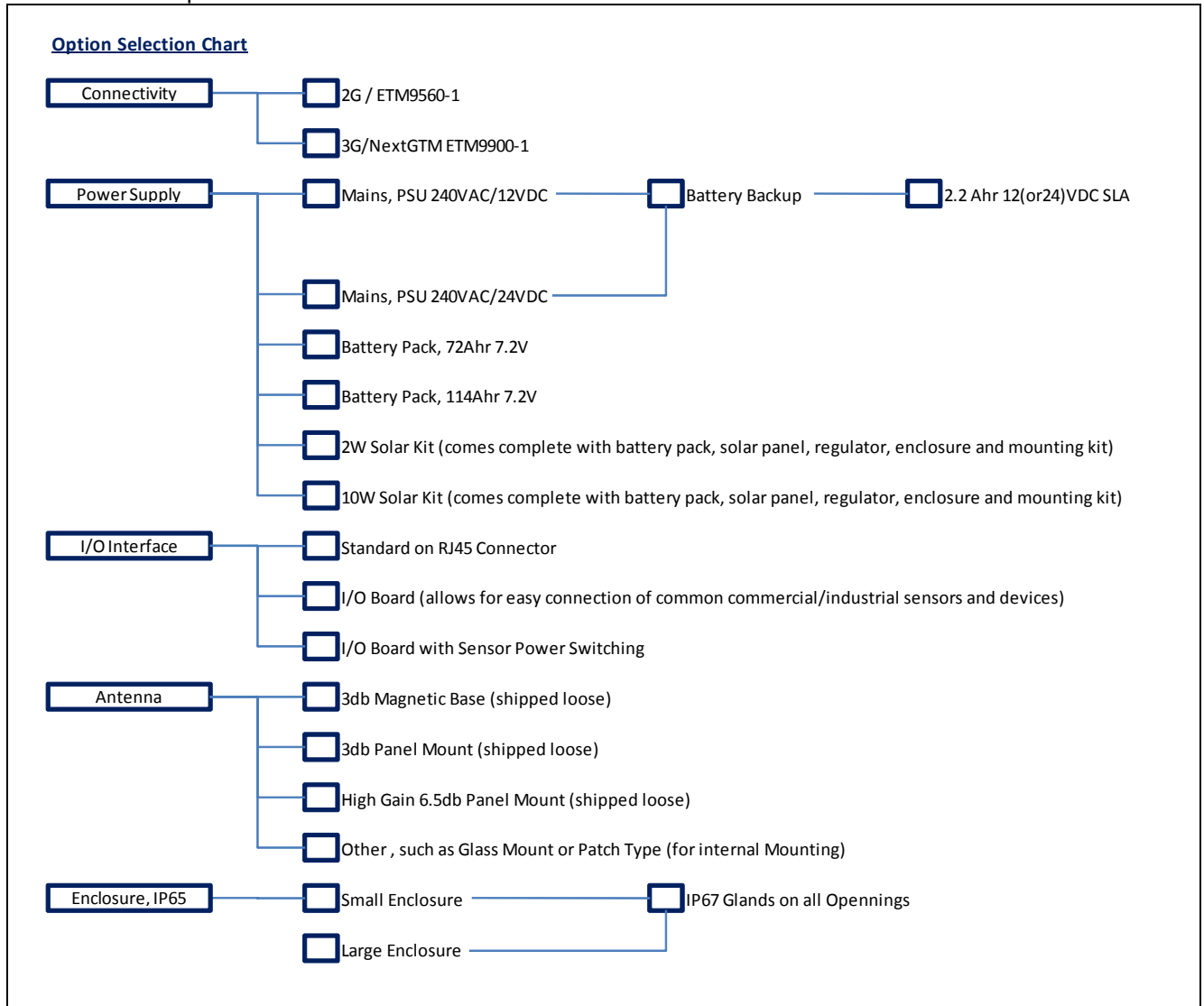
What's Required?





ETM terminals and kits are enabled for easy integration into third party systems, or for simple out of the box applications using SMS, as such the user is not locked into using any particular service or application. However, to allow for fast easy solutions we provide a complete service including hardware and software.



Hardware Options

The ETM9900-1 or ETM9560-1 intelligent terminal can be applied in numerous combinations if a feature is not described below please contact ETM for further information.

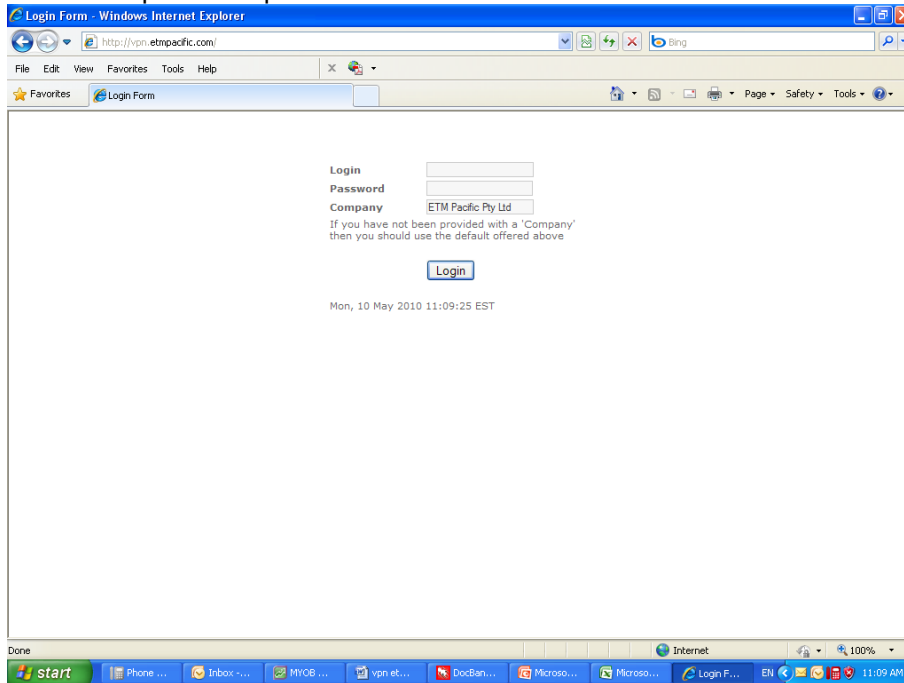


			
<p>Modem Kit Complete with 10W Solar Panel, antenna and pole mounting frame</p>	<p>Modem Kit with 240VAC/12VDC PSU in Small Enclosure</p>	<p>Modem With I/O Board</p>	<p>Typical Antenna Options</p>

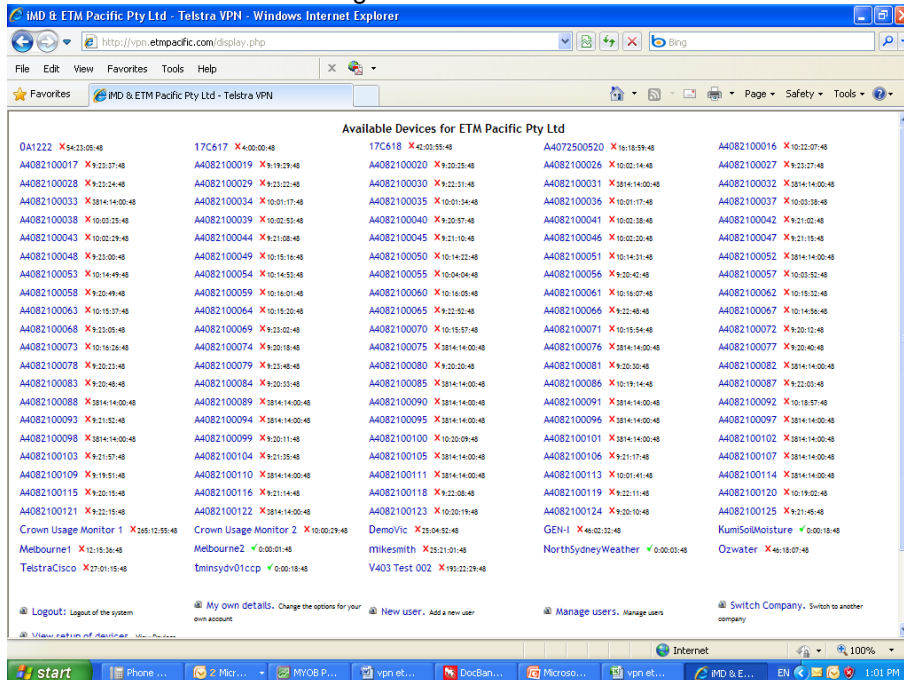
http://vpn.etmpacific.com

http://vpn.etmpacific.com.au is ETM Pacific's server application for remote control, alarm, logging or monitoring applications, the service includes the following features;

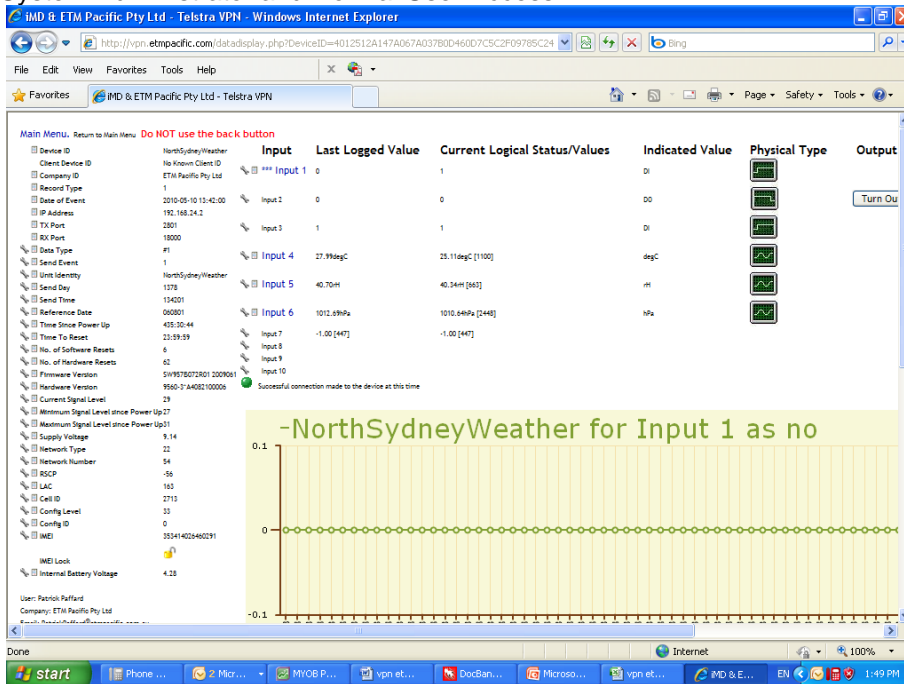
Access via password protected web interface



Main Menu with Device Listing



System Administrator and Normal User Access



Normal Users;

- View data
- Rename inputs (renaming only affects users view)
- Download data (by email or FTP)
- Set individual alarm levels

System Managers

- Add/delete users
- Can see additional data, signal strength etc (screen shot to left is System Manager view)

User Defined Alarms / Automated Delivery of Data

Device in use: NorthSydneyWeather
 ⚠ These configuration options are for the **DATA** report (#22)

▶ Regular Email delivery of data for **all** inputs:

▶ Regular FTP delivery of data for **all** inputs:

⚠ Any, configured, data sends for this device will be sent after 01:00 each day for 'Daily'.

▶ Send me an alert when the device has not sent #22 data for the following period:

⚠ The alert will be sent to the email address configured within the system for your login.

⚠ Set the times that alerts for this device can be sent.
 Alerting control in operation - there are times where alerting is disabled.

Description for this input: Temperature

⚠ These configuration options are for the **DATA** report (#22)

▶ Alerting type for **this one** input:

▶ High level alert message:

▶ Lower level alert message:

▶ Message to send when **this one** input is no longer in an alert state:

▶ Restore alert:

▶ High level:

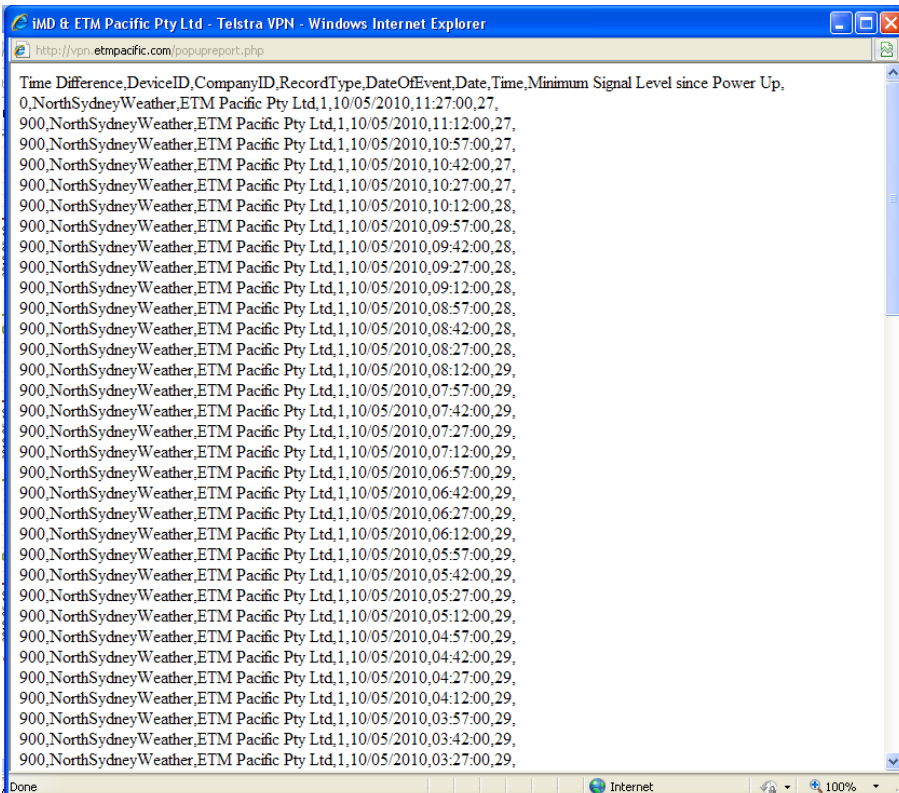
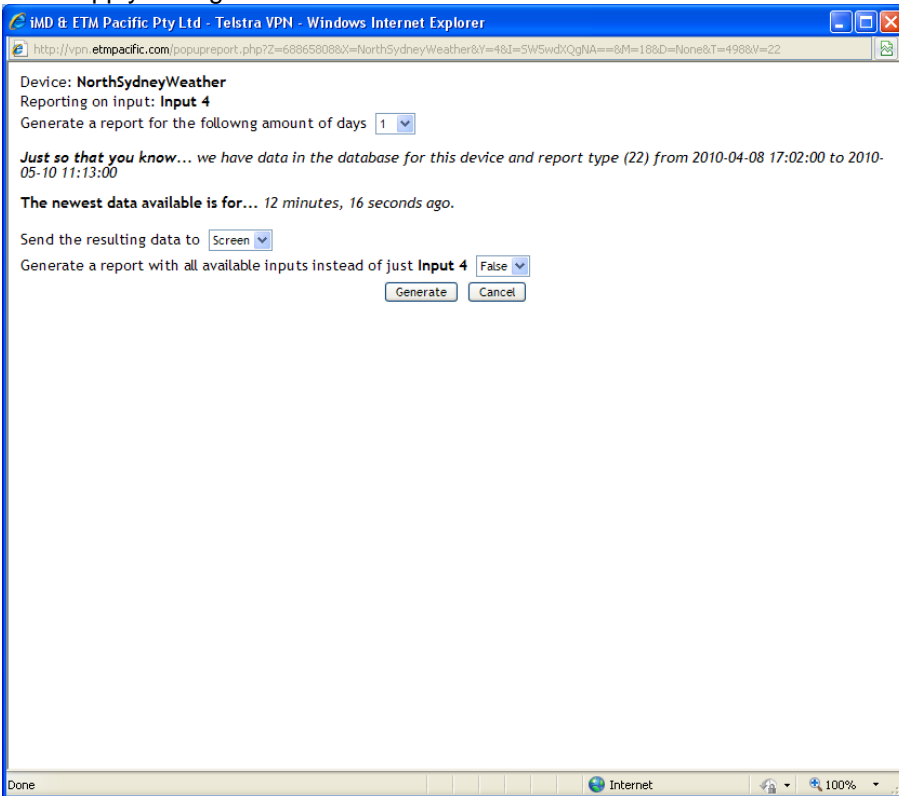
▶ Low level:

User receives #9 email alerts for this one input: **Minimal content:**

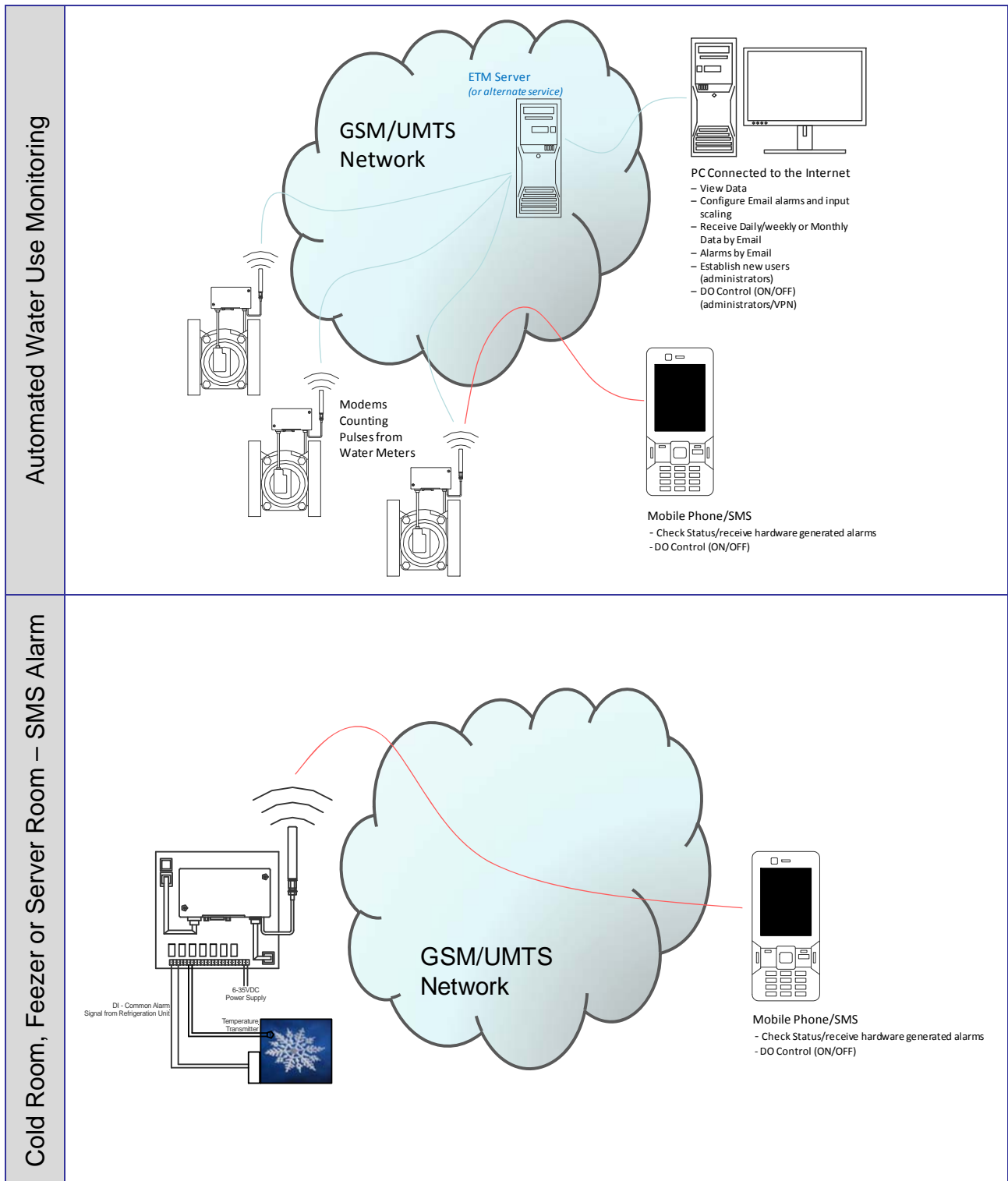
⚠ The data will be sent to the destination configured within the system for your login.

Online Access to Data as Required, note System Managers can set Alarms and See Logs of Additional System variables such as;

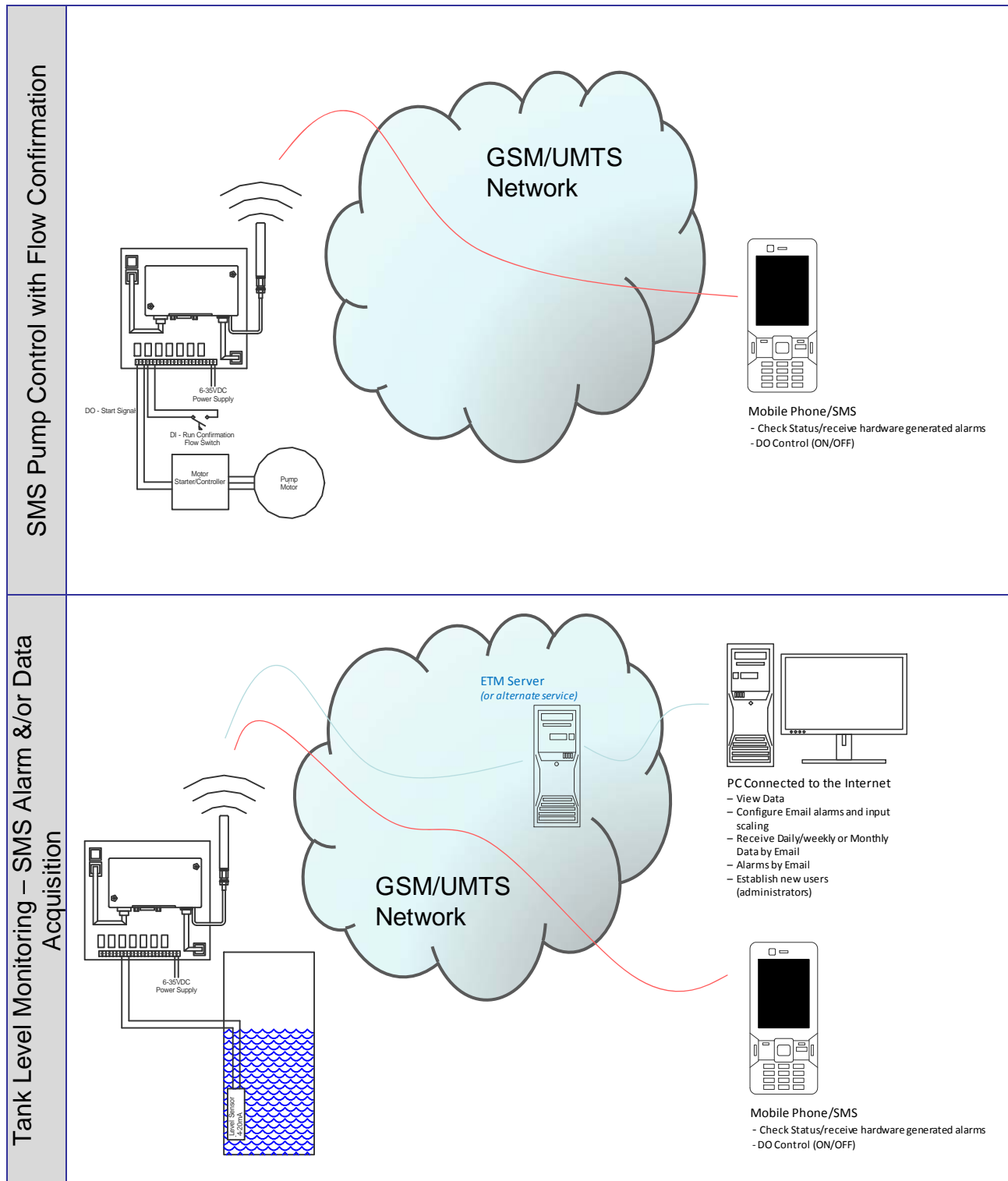
- Signal Strength
- Supply Voltage



Application Examples



Application Examples (continued...)



ETM Pacific Pty Ltd
 Suite 6, 273 Alfred Street
 North Sydney NSW 2060
 Australia
 Ph: +61-2-9956-7377
 Fax: +61-2-9956-5791
www.etmpacific.com.au
info@etmpacific.com.au